



PENTEK[®]
Pentair Water

PRICE LIST

Effective January 1, 2009

Filtration Products

Table of Contents

HOUSINGS

FILTER HOUSINGS 2-5

Slim Line® Housings (Sump/Cap).....	2
3G Slim Line® Housings (Cap/Sump).....	2-3
Standard Housings (Sump/Cap).....	3
Valve-in-Head Housings.....	3
3G Standard Housings (Cap/Sump).....	4
Big Blue® Housings.....	4
Big Clear Housings.....	4
High Temperature Housings.....	4
Reverse Osmosis Membrane Housing.....	4
Multi-Purpose Steel Housing.....	5
Steel Cartridge Filter Housings.....	5

BAG FILTER ASSEMBLIES..... 5

Bag Housings - Polypropylene.....	5
-----------------------------------	---

CARTRIDGES

SEDIMENT FILTER CARTRIDGES 8-10

Standard Sediment Filter Cartridges.....	8-9
Ceramic Cartridge.....	9
High Efficiency Polypropylene Cartridges.....	9
Big Blue® Sediment Cartridges.....	9
Filter Bags for Polypropylene Bag Housings.....	10

TASTE & ODOR FILTER CARTRIDGES 10-11

Standard Taste & Odor Cartridges.....	10-11
Big Blue® Taste & Odor Cartridges.....	11

SPECIALTY CARTRIDGES 12

Deionization Cartridges.....	12
Iron Reduction Cartridge.....	12
Oil Adsorbing Cartridge.....	12
Fibredyne™ Electroplating Cartridges.....	12
Phosphate Crystal Cartridges.....	12
Water Softening Cartridges.....	12
Chloramine Reduction Cartridges.....	12
Microguard™ Membrane Cartridges.....	12
Empty Cartridges - Unassembled.....	12

FILTRATION SYSTEMS

INLINE FILTRATION SYSTEMS..... 14-15

Traditional Inline Filter Systems.....	14
Inline Filter Systems.....	14-15
Inline Filter Clips.....	15

QUICK-CHANGE FILTRATION SYSTEMS 15-16

Quick-Change Filter Systems.....	15
Quick-Change Filter Cartridge Replacements.....	16
Quick-Change Replacement Heads.....	16

DRINKING WATER FILTRATION SYSTEMS 16-18

Drinking Water Filtration Systems.....	16
Drinking Water Filtration Systems Parts & Accessories.....	16
Arsenic Reduction Filter System.....	16
Reverse Osmosis Filter Systems.....	16

Reverse Osmosis Elements & Accessories.....	16
Basic Filter Systems.....	17
Complete 3G Filter Systems w/Microguard™ Cartridges.....	17
Complete Filter Systems.....	17
UV Systems.....	17
UV Systems Service Parts.....	18

WHOLE HOUSE ULTRAFILTRATION SYSTEMS 18

Freshpoint Ultrafiltration System.....	18
--	----

PARTS & ACCESSORIES

PARTS & ACCESSORIES 20-23

Differential Pressure Gauges.....	20
Faucets.....	20
Mounting Brackets.....	20
Universal Mounting Brackets.....	20
Spanner Wrenches.....	20
Cartridge Couplers.....	20
Filter Housing Caps.....	20-21
3G Filter Housing Caps.....	21
Filter Housing Sumps.....	21-22
3G Filter Housing Sumps.....	22
O-rings.....	22
Pressure Relief Button Kits.....	22
Cartons.....	23
Bag Vessel Service Parts.....	23
ST Series Stainless Steel Housing Service Parts.....	23

Standard Terms & Conditions of Sale..... 24-25

Product Return Policy..... 25

Additional Conditions and Notes..... 25

Sales Offices..... 26

Key to Abbreviations

BB	Big Blue®	LX	Lexan
BK	Black	MB	Mounting Bosses for MC-1A bracket
BL	Blue	MM	Meter Mount for Differential Pressure Gauges
Cart	Cartridge	PR	Pressure Release
CL	Clear	SS	Stainless Steel
GAC	Granular Activated Carbon	ST	Standard
Hsg	Housing	W/	With
IB	Integral Bracket	W/O	With Out

HOUSINGS

FILTER HOUSINGS	2-5
Slim Line® Housings (Sump/Cap)	2
3G Slim Line® Housings (Cap/Sump)	2-3
Standard Housings (Sump/Cap)	3
Valve-in-Head Housings	3
3G Standard Housings (Cap/Sump)	4
Big Blue® Housings	4
Big Clear Housing	4
High Temperature Housings	4
Reverse Osmosis Membrane Housing	4
Multi-Purpose Steel Housing	5
Steel Cartridge Filter Housings	5
 BAG HOUSING ASSEMBLIES	 5
Bag Housings - Polypropylene	5



Item No.	Description	Volume (Cubic Ft)	Weight (lbs)	Case Quantity	Price Each (US \$)
----------	-------------	----------------------	-----------------	------------------	-----------------------

Filter Housings

Slim Line® HOUSINGS (Sump/Cap)

1/4-inch HOUSINGS

158138	1/4" #5 Blue/Black w/o pr	1.31	16	12	\$14.46
158133	1/4" #5 Clear/Blue w/o pr	1.31	19	12	\$19.55
158115	1/4" #10 Slim Line® Blue/Black w/pr	2.05	26.4	12	\$10.95
158114	1/4" #10 Slim Line® Blue/Black w/o pr	2.05	26.2	12	\$10.70
158116	1/4" #10 Slim Line® Clear/Blue w/o pr	2.05	22.2	12	\$15.60
158117	1/4" #10 Slim Line® Clear/Blue w/pr	2.05	22.2	12	\$15.85
158120	1/4" #10 Slim Line® Black/Black w/o pr	2.05	22.2	12	\$10.70
158125	1/4" #10 Slim Line® White/White w/o pr	2.05	22.2	12	\$10.70
158182	1/4" #10 Slim Line® White/White w/pr	2.05	22.2	12	\$11.39
158179	1/4" #10 Countertop White/White	2.05	26.4	12	\$17.14

3/8-inch HOUSINGS

158002	3/8" #5 Blue/Black w/pr	1.31	16	12	\$15.13
158003	3/8" #5 Blue/Black w/o pr	1.31	16	12	\$15.39
158110	3/8" #5 Clear/Blue w/pr	1.31	19	12	\$22.26
158111	3/8" #5 Clear/Blue w/o pr	1.31	19	12	\$21.74
158005	3/8" #10 Slim Line® Blue/Black w/pr	2.05	26.4	12	\$11.00
158006	3/8" #10 Slim Line® Blue/Black w/o pr	2.05	26.2	12	\$10.75
158007	3/8" #10 Slim Line® Clear/Blue w/pr	2.05	22.4	12	\$16.75
158008	3/8" #10 Slim Line® Clear/Blue w/o pr	2.05	22.2	12	\$16.25
158149	3/8" #10 Slim Line® White/White w/pr	2.05	22.2	12	\$11.34
158098	3/8" #10 Slim Line® White/White w/o pr	2.05	22.2	12	\$10.35
158129	3/8" #20 Slim Line® Blue/Black w/o pr	3.19	37	8	\$34.94

1/2-inch HOUSINGS

158195	1/2" #10 Slim Line® Blue/Black w/pr	2.05	26.4	12	\$16.28
158196	1/2" #10 Slim Line® Blue/Black w/o pr	2.05	26.2	12	\$16.02
158214	1/2" #10 Slim Line® Clear/Blue w/pr	2.05	22.4	12	\$24.13
158215	1/2" #10 Slim Line® Clear/Blue w/o pr	2.05	22.2	12	\$23.87
158204	1/2" #20 Slim Line® Blue/Black w/pr	3.19	37	8	\$34.94
158205	1/2" #20 Slim Line® Blue/Black w/o pr	3.19	37	8	\$34.68

3G Slim Line® HOUSINGS (Cap/Sump)

1/4-inch NPT, Mounting Boss Housings

158598	#10 3G Slim Line® Black/Blue 1/4" MB w/pr	2.69	32.4	12	\$14.77
158599	#10 3G Slim Line® Blue/Clear 1/4" MB w/o pr	2.69	30.6	12	\$21.48
158601	#10 3G Slim Line® White/White 1/4" MB w/o pr	2.69	32.2	12	\$14.51

1/4-inch John Guest® Quick Connect, Mounting Boss Housings

158602	#10 3G Slim Line® Black/Blue 1/4" QC MB w/o pr	2.69	32.3	12	\$19.24
158603	#10 3G Slim Line® Black/Blue 1/4" QC MB w/pr	2.69	32.5	12	\$19.50
158604	#10 3G Slim Line® Blue/Clear 1/4" QC MB w/o pr	2.69	30.7	12	\$24.54
158606	#10 3G Slim Line® White/White 1/4" QC MB w/o pr	2.69	32.3	12	\$20.28
158607	#10 3G Slim Line® White/White 1/4" QC MB w/pr	2.69	32.5	12	\$20.54

1/4-inch NPT, Integral Bracket Housings

158637	#10 3G Slim Line® Blue/Clear 1/4" IB w/pr	2.69	32.2	12	\$23.82
158638	#10 3G Slim Line® White/White 1/4" IB w/pr	2.69	33.7	12	\$16.85

1/4-inch John Guest® Quick Connect, Integral Bracket Housings

158639	#10 3G Slim Line® Black/Blue 1/4" QC IB w/pr	2.69	33.8	12	\$20.38
158641	#10 3G Slim Line® White/White 1/4" QC IB w/pr	2.69	33.8	12	\$20.38

Item No.	Description	Volume (Cubic Ft)	Weight (lbs)	Case Quantity	Price Each (US \$)
----------	-------------	----------------------	-----------------	------------------	-----------------------

Filter Housings

3/8-inch NPT, Mounting Boss Housings

158608	#10 3G Slim Line® Black/Blue 3/8" MB w/o pr	2.69	32.2	12	\$14.51
158610	#10 3G Slim Line® Blue/Clear 3/8" MB w/o pr	2.69	30.6	12	\$21.48

3/8-inch John Guest® Quick Connect, Mounting Boss Housings

158614	#10 3G Slim Line® Black/Blue 3/8" QC MB w/o pr	2.69	32.3	12	\$19.71
158616	#10 3G Slim Line® Blue/Clear 3/8" QC MB w/o pr	2.69	30.7	12	\$26.68
158619	#10 3G Slim Line® White/White 3/8" QC MB w/o pr	2.69	32.3	12	\$19.71

3/8-inch NPT, Integral Bracket Housings

158642	#10 3G Slim Line® Black/Blue 3/8" IB w/pr	2.69	33.7	12	\$16.85
158643	#10 3G Slim Line® Blue/Clear 3/8" IB w/pr	2.69	32.2	12	\$23.82

3/8-inch John Guest® Quick Connect, Integral Bracket Housings

158647	#10 3G Slim Line® White/White 3/8" QC IB w/pr	2.69	33.8	12	\$22.05
--------	---	------	------	----	---------

1/2-inch NPT, Mounting Boss Housings

158620	#10 3G Slim Line® Black/Blue 1/2" MB w/o pr	2.69	32.2	12	\$15.55
158621	#10 3G Slim Line® Black/Blue 1/2" MB w/pr	2.69	32.4	12	\$15.81
158622	#10 3G Slim Line® Blue/Clear 1/2" MB w/o pr	2.69	30.6	12	\$22.98
158623	#10 3G Slim Line® Blue/Clear 1/2" MB w/pr	2.69	30.8	12	\$23.24

1/2-inch John Guest® Quick Connect, Mounting Boss Housings

158625	#10 3G Slim Line® Black/Blue 1/2" QC MB w/pr	2.69	32.5	12	\$23.66
158626	#10 3G Slim Line® Blue/Clear 1/2" QC MB w/o pr	2.69	30.7	12	\$28.60

1/2-inch NPT, Integral Bracket Housings

158648	#10 3G Slim Line® Black/Blue 1/2" IB w/pr	2.69	33.7	12	\$17.37
158649	#10 3G Slim Line® Blue/Clear 1/2" IB w/pr	2.69	32.2	12	\$24.91

1/2-inch NPT or Quick Connect, Integral Bracket Meter Mount Housings

158656	#10 3G Slim Line® Black/Blue 1/2" IB MM* w/pr	2.69	34.1	12	\$29.02
158657	#10 3G Slim Line® Black/Blue 1/2" QC IB MM* w/pr	2.69	34.2	12	\$35.05

***Note:** IB MM Housings not designed to operate without differential pressure gauge. Gauge must be purchased separately. See page 26.

STANDARD HOUSINGS (Sump/Cap)

3/4-inch HOUSINGS

150067	3/4" #10 Blue w/pr, Mounting Bracket Cap	2.75	37.4	12	\$25.85
150068	3/4" #10 Blue w/o pr, Mounting Bracket Cap	2.75	37.2	12	\$25.60
150071	3/4" #10 Clear/Blue w/pr Mounting Bracket Cap	2.75	34.9	12	\$32.96
150072	3/4" #10 Clear/Blue w/o pr, Mounting Bracket Cap	2.75	34.7	12	\$32.70
150435	3/4" #10 Clear/Black w/pr, Mounting Bracket Cap	2.75	34.9	12	\$32.96
150436	3/4" #10 Clear/Black w/o pr, Mounting Bracket Cap	2.75	34.7	12	\$32.70
150069	3/4" #20 Blue w/pr, Mounting Bracket Cap	3.19	37.5	8	\$44.14
150070	3/4" #20 Blue w/o pr, Mounting Bracket Cap	3.19	37.3	8	\$43.88

VALVE-IN-HEAD HOUSINGS

150164	3/4" Valve-In-Head #10 Blue w/pr	2.75	44	12	\$45.81
150437	3/4" Valve-In-Head #10 Clear w/pr	2.75	43	12	\$55.22
150166	3/4" Valve-In-Head #20 Blue w/pr	3.09	40	8	\$63.91



Item No.	Description	Volume (Cubic Ft)	Weight (lbs)	Case Quantity	Price Each (US \$)
----------	-------------	----------------------	-----------------	------------------	-----------------------

Filter Housings

3G STANDARD HOUSINGS (Cap/Sump)

10-inch Opaque

150542	#10 3G Standard Black/Blue 3/4" MB w/pr	3.22	38.6	12	\$24.80
150546	#10 3G Standard Black/Blue 3/4" MB w/o pr	3.22	38.6	12	\$24.54
150550	#10 3G Standard Black/Blue 3/4" IB w/pr	4.67	56	12	\$27.56
150574	#10 3G Standard Black/Blue 3/4" IB MM* w/pr	3.63	43.6	12	\$39.00

*NOTE: Housing is not designed to operate without an installed differential pressure gauge. Gauge must be purchased separately. See page 20.

10-inch Clear

150558	#10 3G Standard Blue/Clear 3/4" MB w/pr	2.69	32.3	12	\$31.72
150587	#10 3G Standard Black/Clear 3/4" MB w/pr	2.69	32.3	12	\$31.72
150566	#10 3G Standard Blue/Clear 3/4" IB w/pr	4.74	56.9	12	\$34.42

20-inch Opaque

150544	#20 3G Standard Black/Blue 3/4" MB w/pr	4.11	32.9	8	\$42.64
150552	#20 3G Standard Black/Blue 3/4" IB w/pr	6.16	49.3	8	\$45.34
150576	#20 3G Standard Black/Blue 3/4" IB MM* w/pr	4.24	33.9	8	\$56.84

*NOTE: Housing is not designed to operate without an installed differential pressure gauge. Gauge must be purchased separately. See page 20.

20-inch Clear

150560	#20 3G Standard Blue/Clear 3/4" MB w/pr	4.09	32.7	8	\$60.58
150564	#20 3G Standard Blue/Clear 3/4" MB w/o pr	4.09	32.7	8	\$60.32
150568	#20 3G Standard Blue/Clear 3/4" IB w/pr	4.2	33.6	8	\$63.34

BIG BLUE® HOUSINGS

150469	3/4" #10 Big Blue® HFPP w/pr	2.79	33.4	6	\$53.46
150467	3/4" #20 Big Blue® HFPP w/pr	3.55	27.9	4	\$77.61
150237	1" #10 Big Blue® HFPP w/pr	2.56	33.4	6	\$51.90
150238	1" #10 Big Blue® HFPP w/o pr	2.56	33.1	6	\$51.15
150233	1" #20 Big Blue® HFPP w/pr	3.16	27.9	4	\$75.35
150234	1" #20 Big Blue® HFPP w/o pr	3.16	27.6	4	\$75.10
150239	1 1/2" #10 Big Blue® HFPP w/pr	2.56	34.6	6	\$55.52
150240	1 1/2" #10 Big Blue® HFPP w/o pr	2.56	34.3	6	\$55.26
150235	1 1/2" #20 Big Blue® HFPP w/pr	3.16	29.7	4	\$79.93
150236	1 1/2" #20 Big Blue® HFPP w/o pr	3.16	29.4	4	\$79.67

BIG CLEAR HOUSING

166219	1" #10 Big Clear LX w/pr	2.56	33.4	6	\$119.89
--------	--------------------------	------	------	---	----------

HIGH TEMPERATURE HOUSINGS

158319	1/2" #10 Slim Line® Black High Temperature	1.21	38	12	\$64.26
150015	3/4" #10 Red High Temperature w/o pr (replaces black)	2.57	49.5	12	\$119.91
150111	3/4" #20 Red High Temperature w/o pr (replaces black)	3.19	57	8	\$188.27

REVERSE OSMOSIS MEMBRANE HOUSING

144376	Reverse Osmosis Membrane Housing - 90° Outlet	2.45	1	35	\$10.15
--------	---	------	---	----	---------

Item No.	Description	Volume (Cubic Ft)	Weight (lbs)	Case Quantity	Price Each (US \$)
----------	-------------	----------------------	-----------------	------------------	-----------------------

Filter Housings

MULTI-PURPOSE STEEL HOUSING

156237	MPST-1, 1.5" 304 Stainless Housing*		16	1	\$755.21
243111	Bag Filter Conversion Kit		4	1	\$145.95

***NOTE:** Uses either 20" BB Cartridges or 420 Bag Filters. Housing is sold as a cartridge filter housing. Bag conversion kit sold separately.

STEEL CARTRIDGE FILTER HOUSINGS

156017-02	ST-1* (3/4" Inlet/Outlet)	0.23	6	1	\$197.99
156018-02	ST-2* (3/4" Inlet/Outlet)	0.36	9	1	\$350.84
156019-02	ST-3* (3/4" Inlet/Outlet)	0.5	12	1	\$422.32
156025-02	ST-BC-4 (2" Inlet/Outlet)	2	25	1	\$1,049.04
156026-02	ST-BC-8 (2" Inlet/Outlet)	2.88	33	1	\$1,135.41
156027-02	ST-BC-12 (2" Inlet/Outlet)	4	38	1	\$1,235.34
156028-02	ST-BC-16 (2" Inlet/Outlet)	4.89	44	1	\$1,441.04
156032-02	ST-BC-20 (2" Inlet/Outlet)	4.98	50	1	\$1,746.52
144128	Wall Bracket for ST-1, ST-2, & ST-3		0.2	1	\$13.44
156037	Mounting Bracket Kit for ST-1, ST-2, & ST-3		0.2	1	\$18.98

Bag Housing Assemblies

BAG HOUSINGS - POLYPROPYLENE

150360	PBH-410-1 (10" Bag Vessel 1" inlet/outlet)	0.51	6	1	\$140.40
150338	PBH-410-1.5 (10" Bag Vessel 1 1/2" inlet/outlet)	0.51	7	1	\$150.80
150367	PBH-420-1 (20" Bag Vessel 1" inlet/outlet)	0.92	9	1	\$161.20
150337	PBH-420-1.5 (20" Bag Vessel 1 1/2" inlet/outlet)	0.92	9	1	\$171.60
150370	PBH & BB Housing Stand	0.63	2	1	\$24.54

See page 23 for Service Parts.

See page 10 for filter bags.



Housings

FILTER CARTRIDGES

SEDIMENT FILTER CARTRIDGES	8-10
Standard Sediment Filter Cartridges	8-9
Ceramic Cartridge	9
High-Efficiency Polypropylene Cartridges	9
Big Blue® Sediment Cartridges	9
Filter Bags for Polypropylene Bag Housings	10
TASTE & ODOR FILTER CARTRIDGES	10-11
Standard Taste & Odor Cartridges	10-11
Big Blue® Taste & Odor Cartridges	11
SPECIALTY FILTER CARTRIDGES	12
Deionization Cartridges	12
Iron Reduction Cartridge	12
Oil Adsorbing Cartridge	12
FibreDyne™ Electroplating Cartridges	12
Phosphate Crystal Cartridges	12
Water Softening Cartridges	12
Chloramine Reduction Cartridges	12
MicroGuard™ Membrane Cartridges	12
Empty Cartridges - Unassembled	12



Item No.	Description	Microns (nominal)	Volume (Cubic Ft)	Weight (lbs)	Case Quantity	Price Each (US \$)
----------	-------------	----------------------	----------------------	-----------------	------------------	-----------------------

Sediment Filter Cartridges

STANDARD SEDIMENT CARTRIDGES (approx. 2½-inch diameter)

LENGTH - 4¾-inch

155030-43	P5-478 Spun Polypropylene	5	0.56	5.1	24	\$3.55
155031-43	R30-478 Pleated Polyester	30	0.68	5.5	24	\$8.01

LENGTH - 9¾-inch

155001-43	S1 Pleated Cellulose	20	1.21	8.8	24	\$4.24
155017-43	R30 Pleated Polyester - Reusable	30	1.21	8.8	24	\$8.54
155038-43	R50 Pleated Polyester - Reusable	50	1.21	8.3	24	\$8.12
255481-43	ECP1-10 Pleated Cellulose-Polyester	1	1.22	8.8	24	\$6.47
255482-43	ECP5-10 Pleated Cellulose-Polyester	5	1.22	8.8	24	\$6.05
255483-43	ECP20-10 Pleated Cellulose-Polyester	20	1.22	8.8	24	\$5.78
255484-43	ECP50-10 Pleated Cellulose-Polyester	50	1.22	8.8	24	\$5.78
155748-43	PD-1-934 Polydepth®	1	1.12	10.6	24	\$5.03
155749-43	PD-5-934 Polydepth®	5	1.12	12	24	\$5.03
155750-43	PD-10-934 Polydepth®	10	1.12	11.6	24	\$4.93
155751-43	PD-25-934 Polydepth®	25	1.12	11.8	24	\$4.93
155752-43	PD-50-934 Polydepth®	50	1.12	11.8	24	\$4.88

LENGTH - 9⅞-inch

155225-43	P1 Spun Polypropylene	1	1.02	10.1	24	\$4.14
155014-43	P5 Spun Polypropylene	5	1.02	9.4	24	\$3.82
155015-43	P25 Spun Polypropylene	25	1.02	8.5	24	\$3.72
155071-43	WP5 Polypropylene String-Wound	5	1.02	10.1	24	\$5.84
155072-43	WP30 Polypropylene String-Wound	30	1.02	10.1	24	\$5.68
155186-43	CW-F Polypropylene String-Wound	Fine	1.02	11	24	\$3.82
155187-43	CW-MF Polypropylene String-Wound	Med. Fine	1.02	11	24	\$3.50
155214-43	CW-50 Polypropylene String-Wound	50	1.02	8	24	\$3.08

LENGTH - 20-inch

155303-43	S1-20 Pleated Cellulose	20	1.36	14	14	\$9.65
155304-43	P1-20 Spun Polypropylene	1	1.67	15.6	20	\$8.54
155016-43	P5-20 Spun Polypropylene	5	1.67	15.6	20	\$7.75
155226-43	P25-20 Spun Polypropylene	25	1.67	15.6	20	\$7.53
255485-43	ECP1-20 Pleated Cellulose-Polyester	1	1.37	14	14	\$15.17
255486-43	ECP5-20 Pleated Cellulose-Polyester	5	1.37	14	14	\$11.89
255487-43	ECP20-20 Pleated Cellulose-Polyester	20	1.37	14	14	\$11.89
255488-43	ECP50-20 Pleated Cellulose-Polyester	50	1.37	14	14	\$11.89
155416-43	R30-20 Pleated Polyester - Reusable	30	1.36	14	14	\$16.39
155755-43	PD-1-20 Polydepth®	1	1.73	18.6	20	\$9.16
155756-43	PD-5-20 Polydepth®	5	1.73	19	20	\$9.16
155757-43	PD-10-20 Polydepth®	10	1.73	20.7	20	\$8.84
155758-43	PD-25-20 Polydepth®	25	1.73	21.1	20	\$8.84
155759-43	PD-50-20 Polydepth®	50	1.73	21.1	20	\$8.84

LENGTH - 30-inch

155227-43	P1-30 Spun Polypropylene	1	2.57	25	20	\$10.51
155228-43	P5-30 Spun Polypropylene	5	2.57	25	20	\$9.92
155762-43	PD-1-30 Polydepth®	1	2.56	29.5	20	\$13.23
155763-43	PD-5-30 Polydepth®	5	2.56	28.2	20	\$13.23
155765-43	PD-25-30 Polydepth®	25	2.56	29.6	20	\$13.07



Item No.	Description	Microns (nominal)	Volume (Cubic Ft)	Weight (lbs)	Case Quantity	Price Each (US \$)
----------	-------------	----------------------	----------------------	-----------------	------------------	-----------------------

Sediment Filter Cartridges

LENGTH - 40-inch

155422-43	P5-40 Spun Polypropylene	5	3.23		20	\$15.01
155769-43	PD-1-40 Polydepth®	1	3.23	38	20	\$17.57
155770-43	PD-5-40 Polydepth®	5	3.23	35	20	\$17.57
155772-43	PD-25-40 Polydepth®	25	3.23	41	20	\$17.19

CERAMIC CARTRIDGE

155159-43	CRE-1 Ceramic Element	1	0.54	6.1	6	\$33.67
-----------	-----------------------	---	------	-----	---	---------

HIGH-EFFICIENCY POLYPROPYLENE CARTRIDGES

P0.2-10E	10" Pleated Polypropylene - DOE	0.2	0.07	0.9	1	\$65.72
P0.2-20E	20" Pleated Polypropylene - DOE	0.2	0.12	1.5	1	\$131.33

BIG BLUE® SEDIMENT CARTRIDGES (approx. 4½-inch diameter)

LENGTH - 10-inch

155405-43	S1-BB Pleated Cellulose	20	1.23	8	8	\$12.04
255489-43	ECP1-BB Pleated Cellulose-Polyester	1	1.23	8	8	\$15.39
255490-43	ECP5-BB Pleated Cellulose-Polyester	5	1.23	8	8	\$14.90
255491-43	ECP20-BB Pleated Cellulose-Polyester	20	1.23	8	8	\$14.90
255492-43	ECP50-BB Pleated Cellulose-Polyester	50	1.23	8	8	\$14.90
155101-43	R30-BB Pleated Polyester - Reusable	30	1.23	8.5	8	\$17.45
155053-43	R50-BB Pleated Polyester - Reusable	50	1.23	8	8	\$13.64
155359-43	DGD-2501 Dual-Gradient Polypropylene	1	1.42	10	8	\$13.85
155357-43	DGD-5005 Dual-Gradient Polypropylene	5	1.42	10	8	\$13.34
155355-43	DGD-7525 Dual-Gradient Polypropylene	25	1.42	10	8	\$13.24
355212-43	WP5BB97P Polypropylene String-Wound	0.5	1.42	13.3	8	\$19.04
355213-43	WP1BB97P Polypropylene String-Wound	1	1.42	12.3	8	\$18.51
355214-43	WP5BB97P Polypropylene String-Wound	5	1.42	12.3	8	\$18.25
355215-43	WP10BB97P Polypropylene String-Wound	10	1.42	12.3	8	\$17.66
355216-43	WP25BB97P Polypropylene String-Wound	25	1.42	12.3	8	\$17.45
355217-43	WPX5BB97P Fibrillated Polypropylene String-Wound	5	1.42	16.3	8	\$18.75
355218-43	WPX10BB97P Fibrillated Polypropylene String-Wound	10	1.42	13.1	8	\$18.21
355219-43	WPX25BB97P Fibrillated Polypropylene String-Wound	25	1.42	11.8	8	\$17.94
355220-43	WPX50BB97P Fibrillated Polypropylene String-Wound	50	1.42	10.5	8	\$16.66
355221-43	WPX100BB97P Fibrillated Polypropylene String-Wound	100	1.42	10	8	\$15.37

LENGTH - 20-inch

155305-43	S1-20BB Pleated Cellulose	20	2.13	10	6	\$21.49
255493-43	ECP1-20BB Pleated Cellulose-Polyester	1	2.14	10	6	\$30.77
255494-43	ECP5-20BB Pleated Cellulose-Polyester	5	2.14	10	6	\$27.95
255495-43	ECP20-20BB Pleated Cellulose-Polyester	20	2.14	10	6	\$27.95
255496-43	ECP50-20BB Pleated Cellulose-Polyester	50	2.14	10	6	\$27.95
155430-43	R30-20BB Pleated Polyester - Reusable	30	2.13	10	6	\$34.69
155360-43	DGD-2501-20 Dual-Gradient Polypropylene	1	2.13	23	6	\$25.60
155358-43	DGD-5005-20 Dual-Gradient Polypropylene	5	2.13	23	6	\$24.57
155356-43	DGD-7525-20 Dual-Gradient Polypropylene	25	2.13	23	6	\$24.46
355222-43	WP1BB20P Polypropylene String-Wound	1	2.13	29.2	6	\$45.03
355223-43	WP5BB20P Polypropylene String-Wound	5	2.13	29.2	6	\$41.53
355225-43	WP25BB20P Polypropylene String-Wound	25	2.13	29.2	6	\$40.95
355226-43	WPX100BB20P Fibrillated Polypropylene String-Wound	100	2.13	29.2	6	\$31.98





Item No.	Description	Microns (nominal)	Volume (Cubic Ft)	Weight (lbs)	Case Quantity	Price Each (US \$)
----------	-------------	----------------------	----------------------	-----------------	------------------	-----------------------

Sediment Filter Cartridges

FILTER BAGS FOR POLYPROPYLENE BAG HOUSINGS

Size #410 Polypropylene Felt Bags

155383-03	BP-410-1	1	1.67	5	20	\$3.33
155385-03	BP-410-5	5	1.67	5	20	\$3.12
155387-03	BP-410-10	10	1.67	5	20	\$3.02
155389-03	BP-410-25	25	1.67	5	20	\$3.02
155391-03	BP-410-50	20	1.67	5	20	\$3.02
155393-03	BP-410-100	100	1.67	5	20	\$3.12
155395-03	BP-410-200	200	1.67	5	20	\$3.22

Size #420 Polypropylene Felt Bags

155384-03	BP-420-1	1	1.67	5	20	\$4.58
155386-03	BP-420-5	5	1.67	5	20	\$4.16
155388-03	BP-420-10	10	1.67	5	20	\$4.58
155390-03	BP-420-25	25	1.67	5	20	\$4.06
155392-03	BP-420-50	20	1.67	5	20	\$4.06
155394-03	BP-420-100	100	1.67	5	20	\$4.16
155396-03	BP-420-200	200	1.67	5	20	\$4.37

Taste & Odor Filter Cartridges

STANDARD TASTE & ODOR CARTRIDGES (approx. 2½-inch diameter)

LENGTH - 4¾-inch

155022-43	C2 Activated Carbon-Impregnated Cellulose	5	0.56	6.5	24	\$6.68
155110-43	GAC-5 Granular Activated Carbon		0.65	12.3	24	\$10.00
155169-43	CBC-5 Carbon Block	0.5	0.62	12.5	24	\$13.43
255424-03	EP-5 Carbon Block	5	0.62	12.5	24	\$4.01

LENGTH - 9¾-inch (continues on next page)

155002-43	C1 Activated Carbon-Impregnated Cellulose	5	1.21	11.3	24	\$7.12
155528-43	CS1 Activated Carbon-Impregnated Cellulose	5	1.0	8.6	24	\$6.05
155367-43	NCP-10 Pleated Carbon-Impregnated Polyester	10	1.21	11.3	24	\$10.00
155109-43	GAC-10 Granular Activated Carbon		0.74	12.1	12	\$11.18
155254-43	SGAC-10 Silver-Impregnated Granular Activated Carbon		0.67	15	12	\$42.47
155131-43	TSGAC-10 Combination Carbon/Phosphate		0.74	12.1	12	\$24.16
155155-43	CC-10 Coconut Granular Activated Carbon		0.74	12.1	12	\$11.79
255800-43	UDS-10EX1 Bacteriostatic KDF/GAC	5	0.624	22.8	12	\$30.86
155634-43	EPM-10 Carbon Block	10	0.74	14	12	\$7.28
155714-43	CEP-10E Thin Wall Coconut Carbon Block	5	0.74	9.6	12	\$9.83
155531-43	EP-10 Carbon Block	5	0.74	14	12	\$8.56
255671-43	CFB-10 (10") Modified Carbon Block	10	0.66	7	12	\$10.00
255674-43	CFB-Plus10 (10") Modified Carbon Block	5	0.66	7	12	\$10.91
155162-43	CBC-10 Carbon Block	0.5	0.74	14	12	\$15.94
255382-43	CB1-10 Carbon Block	1	0.75	14	12	\$10.39
155350-43	SCBC-10 Silver-Impregnated Carbon Block	0.5	0.75	19.4	12	\$25.04
155713-43	CCBC-10 Coconut Carbon Block	1	0.74	12.8	12	\$15.84
155268-43	CBR2-10 Carbon Block w/Lead Reduction	0.5	0.74	19.4	12	\$19.96
155403-43	CBR2-10R Carbon Block w/Lead Reduction & Flow Control	0.5	0.74	19.4	12	\$20.28
255679-43	CFBC-10 (10") Modified Carbon Block	0.5	0.66	7	12	\$15.68
255681-43	CFB-PB10 (10") Modified Carbon Block	0.5	0.66	7	12	\$18.89
155271-43	CBU-10 UV System Replacement Cartridge	0.5	0.74	19.1	12	\$22.63
455903-43	FloPlus 10	0.5	0.66	7	12	\$19.80

Item No.	Description	Microns (nominal)	Volume (Cubic Ft)	Weight (lbs)	Case Quantity	Price Each (US \$)
----------	-------------	----------------------	----------------------	-----------------	------------------	-----------------------

Taste & Odor Filter Cartridges

LENGTH - 20-inch

155597-43	C1-20 Activated Carbon-Impregnated Cellulose	5	1.52	12	14	\$15.41
155397-43	NCP-20 Pleated Carbon-Impregnated Polyester	10	1.36	11.1	14	\$19.63
155111-43	GAC-20 Granular Activated Carbon		1.18	16.6	6	\$22.79
155065-43	RFC-20 Radial-Flow Granular Activated Carbon	7	1.18	11.4	6	\$37.29
155635-43	EPM-20 Carbon Block	10	1.17	17	6	\$14.50
155529-43	EP-20 Carbon Block	5	1.17	17	6	\$17.17
255672-43	CFB-20 (20") Modified Carbon Block	10	1.31	14.5	12	\$19.90
255675-43	CFB-Plus20 (20") Modified Carbon Block	5	1.31	14.5	12	\$21.77
255680-43	CFBC-20 (20") Modified Carbon Block	0.5	1.31	14.5	12	\$31.46
155309-43	CBC-20 Carbon Block	0.5	1.17	15	6	\$30.28
455904-43	FloPlus 20	0.5	1.31	14.5	12	\$38.52

LENGTH - 30-inch

155698-43	EP-30 Carbon Block	5	2.85	46	12	\$56.23
255673-43	CFB-30 (30") Modified Carbon Block	10	1.94	22	12	\$29.91
255676-43	CFB-Plus30 (30") Modified Carbon Block	5	1.94	22	12	\$32.64

LENGTH - 40-inch

155815-03	EP5-40 Carbon Block	5	2.13	33	6	\$71.42
-----------	---------------------	---	------	----	---	---------

BIG BLUE® TASTE & ODOR CARTRIDGES (approx. 4½-inch diameter)

LENGTH - 10-inch

155398-43	NCP-BB Pleated Carbon-Impregnated Polyester	10	1.23	12.9	8	\$23.86
155153-43	GAC-BB Granular Activated Carbon		1.23	19.4	8	\$29.10
255748-43	DBC-10EX2 Bacteriostatic KDF/GAC		0.954	25.9	6	\$61.47
155141-43	RFC-BB Radial-Flow Carbon	25	1.23	19.3	8	\$40.18
155782-43	EPM-BB Carbon Block	10	0.62	12.5	4	\$30.07
155548-43	EP-BB Carbon Briquette	5	0.62	12.5	4	\$30.82
255677-43	CFB-Plus10BB (10") Modified Carbon Block	5	0.88	9	6	\$31.14
155170-43	CBC-BB Carbon Briquette	0.5	0.62	12.5	4	\$48.69
455905-43	FloPlus 10BB	0.5	0.88	9	12	\$58.85

LENGTH - 20-inch

155382-43	NCP-20BB Pleated Carbon-Impregnated Polyester	10	2.13	21.6	6	\$46.55
155249-43	GAC20-BB Granular Activated Carbon		1.36	19	4	\$63.24
155247-43	RFC20-BB Radial-Flow Granular Activated Carbon	25	2.13	27.1	6	\$79.07
155783-43	EPM-20BB Carbon Block	10	1.36	28	4	\$53.07
155583-43	EP-20BB Carbon Block	5	1.36	28	4	\$59.92
155312-43	CBC20-BB Carbon Block	0.5	1.36	28	4	\$105.13
255678-43	CFB-Plus20BB (20") Modified Carbon Block	5	1.76	18	6	\$56.01
455906-43	FloPlus 20BB	0.5	1.76	18	6	\$98.44





Item No.	Description	Microns (nominal)	Volume (Cubic Ft)	Weight (lbs)	Case Quantity	Price Each (US \$)
----------	-------------	----------------------	----------------------	-----------------	------------------	-----------------------

Specialty Filter Cartridges

DEIONIZATION CARTRIDGES

155273-43	PCF1-10MB FDA D.I. Resin (10")		0.54	10.3	6	\$32.50
155274-43	PCF1-20MB FDA D.I. Resin (20")		1.18	21.3	6	\$56.90
155281-43	BBF1-20MB FDA D.I. Resin (20" BB)		1.36	34	4	\$137.55

IRON REDUCTION CARTRIDGE

155263-03	RFFE20-BB Radial-Flow Iron Reduction (20" BB)		1.36	39	4	\$104.55
-----------	---	--	------	----	---	----------

OIL ADSORBING CARTRIDGE

155596-03	OAC-20BB Oil Adsorbing Cartridge (20" BB)		1.89	20	6	\$110.26
-----------	---	--	------	----	---	----------

FIBREDYNE™ ELECTROPLATING CARTRIDGES

255668-43	ELPC-10 Electroplating Cartridge (10")	7	1.51	16	30	\$11.82
255669-43	ELPC-20 Electroplating Cartridge (20")	7	2.97	30	30	\$23.54
255670-43	ELPC-30 Electroplating Cartridge (30")	7	4.37	43	30	\$35.31

PHOSPHATE CRYSTAL CARTRIDGES

155100-43	PCC-1 Phosphate Crystal Cartridge (24 oz.)		0.35	10.9	6	\$60.65
155248-43	PCC212 Phosphate Crystal Cartridge (12 oz.)		1.12	6.8	6	\$25.20
155251-43	PCC218 Phosphate Crystal Cartridge (18 oz.)		1.12	9.1	6	\$30.05

WATER SOFTENING CARTRIDGES

155319-43	WS-10 Softening Resin Cartridge (10")		0.54	10.3	6	\$22.25
155320-43	WS-20 Softening Resin Cartridge (20")		1.18	21.3	6	\$31.05
155321-43	WS-20BB Softening Resin Cartridge (20" BB)		1.36	34	4	\$55.90

CHLORAMINE REDUCTION CARTRIDGES

355056-43	CRFC-BB Radial Flow Carbon (10" BB)	25	1.23	19.3	8	\$92.72
155967-43	CRFC-20BB Radial Flow Carbon (20" BB)	25	2.13	27.1	6	\$185.86
255416-43	ChlorPlus® 10 Carbon Block (10")	1	0.75	11.6	12	\$21.56
255417-43	ChlorPlus® 20 Carbon Block (20")	1	0.85	13.7	6	\$42.48
355752-43	ChlorPlus®-BB Carbon Block (10")	1	0.62	10.0	4	\$65.70
355753-43	ChlorPlus®-20BB Carbon Block (20")	1	1.36	20.0	4	\$141.94

MICROGUARD™ MEMBRANE CARTRIDGES

255420-43	MG-10MCB Carbon Block/Membrane (fits Standard 3G Housing ONLY)	0.15	0.34	4	4	\$87.91
255419-43	MG-10T Triple Element (fits Standard 3G Housing ONLY)	0.15	0.34	4	4	\$155.40
255682-43	MG-CCBR Coconut Carbon Lead/Cyst Reduction	0.15	0.34	4	4	\$78.59

EMPTY CARTRIDGES - UNASSEMBLED (Minimum order 144 pieces each style)

155164	GAC-10 Shell		1.65	10.5	24	\$11.55
155236	PCC2-10 Shell		1.25	7.2	24	\$13.07
155165	GAC-20 Shell		2.81	19.6	25	\$17.12
155237	PCC2-20 Shell		2.81	14.6	30	\$15.59
155154	GAC-BB Shell		1.25	6.4	8	\$20.48
155255	GAC20-BB Shell		3.22	11.3	10	\$35.81

FILTRATION SYSTEMS

INLINE FILTRATION SYSTEMS.....	14-15
Traditional Inline Filter Systems.....	14
Inline Filter Systems.....	14-15
Inline Filter Clips.....	15
QUICK-CHANGE FILTRATION SYSTEMS.....	15-16
Quick-Change Filter Systems.....	15
Quick-Change Filter Cartridge Replacements.....	16
Quick-Change Replacement Heads.....	16
DRINKING WATER FILTRATION SYSTEMS.....	16-18
Drinking Water Filtration Systems.....	16
Drinking Water Filtration Systems Parts & Accessories.....	16
Arsenic Reduction Filter System.....	16
Reverse Osmosis Filter Systems.....	16
Reverse Osmosis Elements & Accessories.....	16
Basic Filter Systems.....	17
Complete 3G Filter Systems with Microguard™ Cartridges.....	17
Complete Filter Systems.....	17
UV Systems.....	17
UV Systems Service Parts.....	18
WHOLE HOUSE ULTRAFILTRATION SYSTEM.....	18
Freshpoint™ Ultrafiltration System.....	18



Item No.	Description	Microns (nominal)	Volume (Cubic Ft)	Weight (lbs)	Case Quantity	Price Each (US \$)
----------	-------------	----------------------	----------------------	-----------------	------------------	-----------------------

Inline Filtration Systems

TRADITIONAL INLINE FILTER SYSTEMS

155656-06	IC-101L Bulk - No Fittings w/4-Color Label		1.51	40	48	\$9.63
155083-06	TS-101L Bulk - No Fittings w/4-Color Label w/Carbon & Crystals		1.51	40	48	\$12.98

INLINE FILTER SYSTEMS

Bituminous Granular Activated Carbon

255499-43	GS-6-B-1/4" FPT 2" x 6"	20	0.24	6	12	\$8.72
255501-43	GS-6-G-1/4" John Guest® 2" x 6"	20	0.24	6	12	\$11.73
255502-43	GS-6-H-3/8" John Guest® 2" x 6"	20	0.24	6	12	\$12.33
255503-43	GS-10-B-1/4" FPT 2" x 10"	20	0.37	9	12	\$9.32
255505-43	GS-10-G-1/4" John Guest® 2" x 10"	20	0.37	9	12	\$12.33
255506-43	GS-10-H-3/8" John Guest® 2" x 10"	20	0.37	9	12	\$12.93
255507-43	GS-210-B-1/4" FPT 2.5" x 11"	20	0.61	10	12	\$12.99
255514-43	GS-215-H-3/8" John Guest® 2.5" x 14"	20	0.61	12	12	\$17.07

Coconut Shell Granular Activated Carbon

255515-43	GS-6RO-B-1/4" FPT 2" x 6"	5	0.24	6	12	\$8.93
255519-43	GS-6RO-G-1/4" John Guest® 2" x 6"	5	0.24	6	12	\$11.91
255521-43	GS-10RO-B-1/4" FPT 2" x 10"	5	0.37	12	12	\$9.52
255522-43	GS-10RO-C-3/8" FPT 2" x 10"	5	0.37	12	12	\$9.52
255525-43	GS-10RO-G-1/4" John Guest® 2" x 10"	5	0.37	12	12	\$12.51
255526-43	GS-10RO-H-3/8" John Guest® 2" x 10"	5	0.37	12	12	\$12.51
255528-43	GS-210RO-C-3/8" FPT 2.5" x 11"	5	0.61	14	12	\$13.70
255531-43	GS-215RO-B-1/4" FPT 2.5" x 14"	5	0.61	18	12	\$14.15

pH Stabilizer (Calcite & Coconut Shell Carbon) Post RO

255541-43	GS-10CAL/RO-B-1/4" FPT 2" x 10"	20	0.37	13	12	\$11.22
255546-43	GS-10CAL/RO-H-3/8" John Guest® 2" x 10"	20	0.37	13	12	\$14.56

Bacteriostatic (KDF & Coconut Shell Carbon)

255547-43	GS-6EXTRA.25-B-1/4" FPT 2" x 6"	5	0.24	10	12	\$14.12
255551-43	GS-6EXTRA.25-G-1/4" John Guest® 2" x 6"	5	0.24	10	12	\$17.19
255553-43	GS-10EXTRA.5-B-1/4" FPT 2" x 10"	5	0.37	15	12	\$16.23
255554-43	GS-10EXTRA.5-C-3/8" FPT 2" x 10"	5	0.37	15	12	\$16.23
255557-43	GS-10EXTRA.5-G-1/4" John Guest® 2" x 10"	5	0.37	15	12	\$19.29
255559-43	GS-210EXTRA1-B-1/4" FPT 2.5" x 11"	5	0.61	24	12	\$27.60
255560-43	GS-210EXTRA1-C-3/8" FPT 2.5" x 11"	5	0.61	24	12	\$27.60
255561-43	GS-210EXTRA1-G-1/4" John Guest® 2.5" x 11"	5	0.61	24	12	\$30.66

Sediment & Rust Particulate

255569-43	GS-6SED/5-B-1/4" FPT 2" x 6"	5	0.24	5	12	\$9.83
255573-43	GS-6SED/5-G-1/4" John Guest® 2" x 6"	5	0.24	5	12	\$12.64
255576-43	GS-10SED/5-C-3/8" FPT 2" x 10"	5	0.37	7	12	\$10.11
255579-43	GS-10SED/5-G-1/4" John Guest® 2" x 10"	5	0.37	7	12	\$12.80
255582-43	GS-210SED/5-C-3/8" FPT 2.5" x 11"	5	0.61	14	12	\$16.28
255587-43	GS-215SED/5-G-1/4" John Guest® 2.5" x 14"	5	0.61	18	12	\$19.74

Lime, Scale, & Chlorine Taste & Odor (Hexametaphosphate & Coconut Shell Carbon)

255589-43	GS-6ALS-B-1/4" FPT 2" x 6"	20	0.24	6	12	\$12.08
255590-43	GS-6ALS-C-3/8" FPT 2" x 6"	20	0.24	6	12	\$12.08
255595-43	GS-10ALS-B-1/4" FPT 2" x 10"	20	0.37	10	12	\$14.24
255596-43	GS-10ALS-C-3/8" FPT 2" x 10"	20	0.37	10	12	\$14.24
255599-43	GS-10ALS-G-1/4" John Guest® 2" x 10"	20	0.37	10	12	\$17.31
255600-43	GS-10ALS-H-3/8" John Guest® 2" x 10"	20	0.37	10	12	\$17.92



Item No.	Description	Microns (nominal)	Volume (Cubic Ft)	Weight (lbs)	Case Quantity	Price Each (US \$)
----------	-------------	----------------------	----------------------	-----------------	------------------	-----------------------

Inline Filtration Systems

Lime & Scale (Hexametaphosphate Feeder)

255601-43	GS-6PH-B-1/4" FPT 2" x 6"		0.24	13	12	\$15.90
255603-43	GS-10PH-B-1/4" FPT 2" x 10"		0.24	22	12	\$25.00
255604-43	GS-10PH-G-1/4" John Guest® 2" x 10"		0.24	22	12	\$27.81

Chlorine Taste & Odor - 1 Micron Carbon Block Filters

255615-43	GS-10CB-1-G-1/4" John Guest® 2" x 10"	1	0.37	9	12	\$23.28
255616-43	GS-10CB-1-H-3/8" John Guest® 2" x 10"	1	0.37	9	12	\$23.87

Chlorine Taste & Odor - 5 Micron Carbon Block Filters

255625-43	GS-6CB-5-B-1/4" FPT 2" x 6"	5	0.24	5	12	\$17.27
255626-43	GS-6CB-5-C-3/8" FPT 2" x 6"	5	0.24	5	12	\$17.27
255629-43	GS-6CB-5-G-1/4" John Guest® 2" x 6"	5	0.24	5	12	\$20.24
255631-43	GS-10CB-5-B-1/4" FPT 2" x 10"	5	0.37	9	12	\$19.06
255632-43	GS-10CB-5-C-3/8" FPT 2" x 10"	5	0.37	9	12	\$19.06
255635-43	GS-10CB-5-G-1/4" John Guest® 2" x 10"	5	0.37	9	12	\$22.04
255636-43	GS-10CB-5-H-3/8" John Guest® 2" x 10"	5	0.37	9	12	\$22.63
255637-43	GS-210CB-5-B-1/4" FPT 2.5" x 11"	5	0.61	11	12	\$25.61
255639-43	GS-210CB-5-G-1/4" John Guest® 2.5" x 11"	5	0.61	11	12	\$28.58
255641-43	GS-215CB-5-B-1/4" FPT 2.5" x 14"	5	0.61	13	12	\$32.45
255642-43	GS-215CB-5-C-3/8" FPT 2.5" x 14"	5	0.61	13	12	\$32.45
255643-43	GS-215CB-5-G-1/4" John Guest® 2.5" x 14"	5	0.61	13	12	\$36.03

Lead, Cyst, Particulate, & Chlorine Taste & Odor Filters

255649-43	GS-10LS-G-1/4" John Guest® 2" x 10"	0.5	0.37	9	12	\$28.26
255651-43	GS-210LS-B-1/4" FPT 2.5" x 11"	1	0.61	15	12	\$31.86

TDS Reduction - High Capacity DI Resin Filters

255655-43	GS-210DI-B-1/4" FPT 2.5" x 11"	20	0.61	17	12	\$22.19
255659-43	GS-215DI-B-1/4" FPT 2.5" x 11"	20	0.61	24	12	\$27.24

INLINE FILTER CLIPS

244454	HF-CLIP1 – 2" Single Inline Filter Clip				100	\$0.98
244455	HF-CLIP2 – 2.5" Single Inline Filter Clip				100	\$0.98

Quick-Change Filtration Systems

QUICK-CHANGE FILTER SYSTEMS

Systems with 1/4" Threaded Inlet/Outlet Fittings

158667	QC10-CBR Block w/Lead Reduction	0.5	0.41	8.5	6	\$41.29
--------	---------------------------------	-----	------	-----	---	---------

Systems with 1/4" John Guest® Inlet/Outlet Fittings (continues on next page)

158682	QC10-CBR-1/4PF Block w/Lead Reduction	0.5	0.51	8.5	6	\$40.48
158683	QC10-EP-1/4PF Block Chlorine Taste & Odor	5	0.51	8.5	6	\$38.55
158684	QC10-GAC-1/4PF Chlorine Taste & Odor		0.51	8.5	6	\$31.43

Systems with 1/4" John Guest® Inlet/Outlet Fittings (continued)

158723	QC10-TSGAC-1/4PF Phosphate/GAC		0.508	10.1	6	\$36.22
158721	QC10-CB1-1/4PF 1 micron Carbon Block	1	0.508	10.2	6	\$40.02

Systems with 3/8" John Guest® Inlet/Outlet Push Fittings

158691	QC10-CBR-3/8PF Block w/Lead Reduction	0.5	0.51	8.5	6	\$40.66
158724	QC10-TSGAC-3/8PF Phosphate/GAC		0.508	10.1	6	\$36.39



Item No.	Description	Microns (nominal)	Volume (Cubic Ft)	Weight (lbs)	Case Quantity	Price Each (US \$)
----------	-------------	-------------------	-------------------	--------------	---------------	--------------------

Quick-Change Filtration Systems

QUICK-CHANGE FILTER CARTRIDGE REPLACEMENTS

155785-43	QC10-CBRR Replacement Cartridge	0.5	0.41	13.2	12	\$28.68
155962-43	QC10-EPR Replacement Cartridge	5	0.41	13.2	12	\$28.03
155901-43	QC10-GACR Replacement Cartridge		0.41	13.1	12	\$18.81
255706-43	QC10-TSGACR Replacement Cartridge		0.41	10.1	12	\$21.50
255705-43	QC10-CB1R Replacement Cartridge	1	0.41	10.2	12	\$28.03
255688-43	QC10-Sed1R Replacement Cartridge	1	0.41	10.2	12	\$23.37

QUICK-CHANGE REPLACEMENT HEADS

144842	QCH 1/4" Threaded Replacement Head				1	\$12.83
244426	QCH-1/4" PF Replacement Head				1	\$18.01
244427	QCH-3/8" PF Replacement Head				1	\$18.29
244435	Quick-Change Replacement Head 1/4" JG PF – New Design				1	\$18.01
244436	Quick-Change Replacement Head 3/8" JG PF – New Design				1	\$18.29

Drinking Water Filtration Systems

DRINKING WATER FILTRATION SYSTEMS

160288	US-1500 Chemical/Lead Reduction System w/Monitor		0.62	6.37	1	\$215.30
160287	US-1000 MTBE Reduction System w/o Monitor - 500 gal.		0.62	6.37	1	\$157.12

DRINKING WATER FILTRATION SYSTEM PARTS & ACCESSORIES

155584-44	P-250 Replacement Cartridge Kit for US-1500		0.16	1.6	2	\$27.78
155832-44	P-250A Replacement Cartridge Kit for US-1000		0.16	1.6	2	\$27.78
150424	SW-5 Spanner Wrench			1.2	6	\$2.95
244439	FT-20LR Faucet			4.5	3	\$40.94

ARSENIC REDUCTION FILTER SYSTEM

160280	AS-301E, Three Stage Arsenic Reduction System		1.25	18.5	1	\$376.69
255401-43	AS-CK, 2 Cartridge Arsenic Reduction Kit		0.25	11	1 pr	\$123.85

REVERSE OSMOSIS FILTER SYSTEMS

161014	RO-3000 w/ROM-230T Thin Film Membrane		3	22	1	\$335.68
161013	RO-3500 Monitored w/ROM-230TN Thin Film Membrane		3	22	1	\$398.10

REVERSE OSMOSIS ELEMENTS AND ACCESSORIES

144376	Reverse Osmosis Membrane Housing - 90° Outlet		2.45	1	35	\$10.15
155349-01	CTAB-2-10HF RO Element - High Flow		0.09	1	1	\$101.18
155415-01	ROM-16C CTA Replacement Membrane		0.11		1	\$66.46
155431-19	ROM26T TFC Replacement Membrane				1	\$84.27
155854-01	ROM-230T Thin Film Membrane for RO-3000		0.11		1	\$106.74
155855-43	ROM-230TN Thin Film Membrane for RO-3500		0.11		1	\$106.74
155923-43	RO Replacement Filter Cartridge Kit for RO-3000/3500		0.17		1	\$39.55
153126	#10 White Sump for RO-3000/RO-3500 RO				1	\$7.47
144988	#10 White RO Membrane Sump for RO-3000/RO-3500				1	\$25.11
144653	Auto Shut-off Valve				1	\$47.75



Item No.	Description	Volume (Cubic Ft)	Weight (lbs)	Case Quantity	Price Each (US \$)
----------	-------------	----------------------	-----------------	------------------	-----------------------

Drinking Water Filtration Systems

BASIC FILTER SYSTEMS

160196	BFS-201 Consisting of: Two 3/8" Slim Line® Blue Housings, Unit Mounting Bracket, Completely Assembled and Packed Within Shipping Carton - Cartridges Not Included	0.69	5.1	1	\$72.42
160166	BBFS-22 Consisting of: Two 20" BB® 1" Housings On Unit Mounting Bracket - Assembled - Cartridges Not Included	2.27	29	1	\$219.15
160168	BBFS-222 w/Three 1" BB® Housings - Cartridges Not Included	3.43	35.3	1	\$316.09



COMPLETE 3G FILTER SYSTEMS WITH MICROGUARD CARTRIDGES

(Includes 3G Housing with Integral Bracket Meter Mount Cap, Three Color Needle Differential Pressure Gauge, Cartridge, Wrench, & Mounting Bracket Screws)

160291	MGS-1/2"-10MCB, #10 3G SL Housing with 10MCB Cartridge			4	\$159.73
160292	MGS-3/4"-10MCB, #10 3G STD Housing with 10MCB Cartridge			4	\$176.33
160293	MGS-1/2"-10T, #10 3G SL Housing with 10T Cartridge			4	\$219.88
160294	MGS-3/4"-10T, #10 3G STD Housing with 10T Cartridge			4	\$219.88

COMPLETE FILTER SYSTEMS

(Includes Housing, Cartridge, Wrench & Bracket)

160365	#10 1/2" SL Red Nylon Housing with PD5 Cartridge			1	\$130.76
160362	#20 3/4" STD Housings with WS-20 Cartridge			1	\$162.43
160363	#20 1" BB Housing with WS-20BB Cartridge			1	\$316.93
160364	#20 1" BB Housing with RFFE20 Cartridge			1	\$408.03
160366	#20 1 1/2" BB Housing with OAC-20BB Cartridge			1	\$277.33
160367	#20 1 1/2" BB Housing with NCP-20BB Cartridge			1	\$185.91



UV SYSTEMS

Domestic

163003	UVS-110-1 (120 v AC/ 60 Hz) 1 GPM	0.52	7	1	\$361.83
163005	UV-110-1 (120 v AC/ 60 Hz) 2 GPM	0.84	9	1	\$417.91
163007	UV-120-1 (120 v AC/ 60 Hz) 8 GPM	1.09	13	1	\$530.39
163009	UVBB-120-1 (120 v AC/ 60 Hz) 15 GPM	1.39	18	1	\$684.79

Domestic Inlines

First time purchase of these UV units requires a UV-BAL-102 ballast 163550.40

255663-43	UV-4-G-1/4" John Guest® 2" x 10"		12	12	\$89.03
255664-43	UV-6-G-1/4" John Guest® 2" x 13"		16	12	\$103.93
255665-43	UV-8-G-1/4" John Guest® 2.5" x 14"		17	12	\$129.10

International

163004	UVS-110-2 (220 v AC/ 50 Hz) 1 GPM	0.52	8	1	\$355.07
163006	UV-110-2 (220 v AC/ 50 Hz) 2 GPM	0.84	10	1	\$417.91
163008	UV-120-2 (220 v AC/ 50 Hz) 8 GPM	1.09	14	1	\$530.39
163010	UVBB-120-2 (220 v AC/ 50 Hz) 15 GPM	1.39	18	1	\$684.79

International Inlines

First time purchase of the UV2 units require a UV-2 ballast. (see item no. 163549 below)

255985-43	UV2-4-G-1/4" John Guest® 2" x 10" 120/230 V		11	12	\$87.37
255992-43	UV2-8-G-1/4" John Guest® 2.5" x 14" 120/230 V		17	12	\$127.88

* UV Service Parts on Next Page . . .



Item No.	Description	Volume (Cubic Ft)	Weight (lbs)	Case Quantity	Price Each (US \$)
----------	-------------	----------------------	-----------------	------------------	-----------------------

Drinking Water Filtration Systems

UV SYSTEM SERVICE PARTS

Domestic

155271-03	CBU-10 Cartridge w/o Inner Wrap (for UVS & UV-110)			12	\$22.43
163543	Plastic Holder w/O-Ring (for UVBB)			1	\$26.50
163517	Spacer Bushing for UV Systems			1	\$4.72
163519	Plunger Rod w/Retainer			1	\$5.84
163504	Quartz Sleeve for UVS			1	\$65.72
163509	Quartz Sleeve for UV-110			1	\$60.79
163513	Quartz Sleeve for UV-120			1	\$80.68
163548	Quartz Sleeve for UVBB			1	\$111.01
163538	O-ring Kit for Quartz Sleeve on UVS			1	\$5.84
163516	O-ring for Quartz Sleeve on UV-110 & UV-120			1	\$5.84
163518	Teflon Sleeve for USV & UV-110			1	\$33.36
163515	Gasket for Stainless Insert Sleeve for UV-120			1	\$14.05
163503	UV Lamp, #10-212 (for UVS)			1	\$71.57
163508	UV Lamp, #11-275 (for UV-110)			1	\$116.85
163512	UV Lamp, #20-463 (for UV-120 & UVBB)			1	\$130.90
163550	UV-BAL-120 - Ballast Power Supply 120V 50/60Hz			1	\$41.34
163501	Ballast (no fuse) 120V/60 Hz (for UVS-110-1)			1	\$97.56
163506	Control Module w/Fuse 120 v / 60 Hz (for UV-110-1)			1	\$233.71
163510	Control Module w/Fuse 120 v / 60 Hz (for UV-120-1)			1	\$233.71
163542	Control Module w/Fuse 120 v / 60 Hz (for UVBB-120-1)			1	\$233.71

International

163549	UV-2BAL - Ballast Power Supply 120/230 V			12	\$58.86
163507	Control Module w/Fuse 220 v / 50 Hz (for UV-110-2)			1	\$229.31
163511	Control Module w/Fuse 220 v / 50 Hz (for UV-120-2)			1	\$229.30
163547	Control Module w/Fuse 220 v / 50 Hz (for UVBB-120-2)			1	\$229.30

Whole House Ultrafiltration System

FRESHPOINT ULTRAFILTRATION SYSTEM

160375	U440 Ultrafiltration System			1	\$1,821.00
160380	U440 Ultrafiltration System w/control			1	\$2,563.00
355536-00	U440 Replacement Filter Module			1	\$1,492.00



PARTS & ACCESSORIES

PARTS & ACCESSORIES	20-23
Differential Pressure Gauges	20
Faucets	20
Mounting Brackets	20
Universal Mounting System	20
Spanner Wrenches	20
Cartridge Couplers	20
Filter Housing Caps	20-21
3G Filter Housing Caps	21
Filter Housing Sumps	21-22
3G Filter Housing Sumps	22
O-rings	22
Pressure Relief Button Kits	22
Cartons	23
Bag Vessel Service Parts	23
ST Series Stainless Steel Housing Service Parts	23

PARTS & ACCESSORIES

Item No.	Description	Case Quantity	Price Each (US \$)
----------	-------------	---------------	--------------------

Parts & Accessories

DIFFERENTIAL PRESSURE GAUGES (Fits all 3G MM Caps)

143550	2 Color Gauge	1	\$27.30
143549	3 Color Needle Gauge	1	\$58.21



FAUCETS

244440	FT-15 Faucet	4.5	3	\$39.34
144839	Faucet, Touch-Flo Air-Gap	1		\$66.56

MOUNTING BRACKETS

244047	Kit for 1/4", 3/8", & 1/2" Slim Line® Housings Bracket and Screws (was 158011)	0.22	1	\$4.06
244046-00	Bracket ONLY for 1/4", 3/8", & 1/2" Slim Line® Housings L-Shaped (was 144025-00)	0.15	1	\$1.75
150578	MC-1A Kit for 3/4" Caps w/Bosses Bracket and Screws (was 150060)	0.64	1	\$6.20
244043	Bracket ONLY for 3/4" Caps w/Bosses L-Shaped (was 144090)	0.41	1	\$2.74
151011	UB-1 Kit for 3/4" Housing U-Shaped Bracket and Screws	0.38	1	\$6.36
144012-00	Bracket ONLY for 3/4" Housing (U-Shaped)	0.32	1	\$2.52
150061	WB-SS Kit, Stainless Steel for Big Blue® Housing Bracket and Screws	0.86	1	\$32.98
144092	Bracket ONLY for all 10" and 20" Big Blue® Housings	1.72	1	\$28.80
244627-02	Two-Housing CCF & RO System Bracket (was 144142-02)	1	1	\$11.74
144169-02	Three-Housing CCF & RO System Bracket	1.6	1	\$16.98
144258	Two-Housing Big Blue® Bracket	3.2	1	\$44.47
144259	Three-Housing Big Blue® Bracket	1		\$61.92



UNIVERSAL MOUNTING SYSTEM

160210	BB Housing Skid, Fiberglass Hardware Kit (Assembly Required)	4		\$454.41
--------	--	---	--	----------

NOTE: Mounting system uses up to four Big Blue®, Big Clear, or PBH Bag Housings in 10" or 20" lengths. Housings can be installed in series, parallel, or any combination. Piping and housings must be purchased separately.

SPANNER WRENCHES

150539	SW-1A for Slim Line® Housings (formerly 150294)	1		\$2.90
150295	SW-2 for 3/4" Housings	1		\$2.90
150296	SW-3 for Big Blue® Housings (10-inch)	1		\$3.12
144368	SW-4 for Big Blue® Housings (20-inch)	1		\$3.12
144880	BW/BC Wrench for Big Clear Housings	1		\$4.74



CARTRIDGE COUPLERS

155003	Cartridge Coupler for Standard Cartridges	1		\$1.60
144229	Cartridge Coupler for Big Blue® Cartridges	1		\$2.30

FILTER HOUSING CAPS (continues on next page)

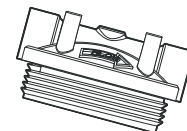
154049	1/4" Black Cap w/o pr for Slim Line® & #5 Blue Housings	1		\$7.28
154053	1/4" Blue Cap w/o pr for Slim Line® & #5 Clear Housings	1		\$7.28
154062	1/4" White Cap w/o pr for Slim Line® Housings	1		\$7.28
154108	3/8" Black Cap w/pr for Slim Line® & #5 Blue Housings	1		\$7.87
154006	3/8" Black Cap w/o pr for Slim Line® & #5 Blue Housings	1		\$7.28
154111	3/8" Blue Cap w/pr for Slim Line® & #5 Clear Housings	1		\$7.87
154010	3/8" Blue Cap w/o pr for Slim Line® & #5 Clear Housings	1		\$7.28
154171	1/2" Black Cap w/pr for Slim Line® & #5 Blue Housings	1		\$10.23

Item No.	Description	Case Quantity	Price Each (US \$)
----------	-------------	---------------	--------------------

Parts & Accessories

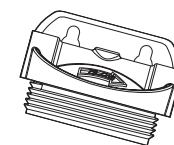
FILTER HOUSING CAPS (continued)

154083	1/2" Black Cap w/o pr for Slim Line® & #5 Blue Housings	1	\$9.69
154175	1/2" Blue Cap w/pr for Slim Line® & #5 Clear Housings	1	\$10.23
154503	1/2" Black Nylon Cap w/o pr for Slim Line® Black Nylon Housings	1	\$30.64
154101	3/4" Black Cap w/pr for #10 & #20 Blue Housings	1	\$11.41
154001	3/4" Black Cap w/o pr for #10 & #20 Blue Housings	1	\$11.41
154102	3/4" Blue Cap w/pr for #10 Clear Housings	1	\$11.41
154115	3/4" Black Mounting Bracket Cap w/pr for #10 & #20 Blue Housings	1	\$11.25
154017	3/4" Black Mounting Bracket Cap w/o pr for #10 & #20 Blue Housings	1	\$10.82
154116	3/4" Blue Mounting Bracket Cap w/pr for #10 Clear Housings	1	\$11.41
154018	3/4" Blue Mounting Bracket Cap w/o pr for #10 Clear Housings	1	\$10.82
154134	3/4" Black VIH Cap w/pr for #10 & #20 VIH Blue Housings	1	\$30.64
154138	3/4" Blue VIH Cap w/pr for #10 Clear VIH housing	1	\$30.64
154061	3/4" Black Nylon Cap w/o pr for #10 & #20 housings	1	\$40.06
154003	3/4" Red High Temperature Cap w/o pr	1	\$40.06
154195	3/4" Black HFPP Cap w/pr for Big Blue® Housings	1	\$43.92
154166	1" Black HFPP Cap w/pr for Big Blue® Housings	1	\$43.92
154077	1" Black HFPP Cap w/o pr for Big Blue® Housings	1	\$43.92
154291	1" Black Cap for Big Clear Housings	1	\$35.08
154167	1 1/2" Black HFPP Cap w/pr for Big Blue® Housings	1	\$45.04
154078	1 1/2" Black HFPP Cap w/o pr for Big Blue® Housings	1	\$44.46
154025	#10, #12, & #20 All Natural Cap, Std., No Plugs	1	\$19.13
154135	#10, #12, & #20 All Natural Cap, Std., w/Two Vent Plugs	1	\$32.08
154351	#10, #12, & #20 All Natural 222 Cap, Std., No Plugs	1	\$55.43
154136	#10, #12, & #20 All Natural 222 Cap, Std., w/Two Vent Plugs	1	\$74.61
154082	Countertop White Cap - 1/4" Inlet/Outlet (for #5 and #10 Units)	1	\$8.79



3G FILTER HOUSING CAPS

154638	3G 3/4" Black Mounting Bracket Cap w/pr	1	\$10.93
154584	3G 3/4" Black Mounting Bracket Cap w/o pr	1	\$10.29
154646	3G 3/4" Black Integral Bracket Cap w/pr	1	\$13.71
154600	3G 3/4" Black Integral Bracket Cap w/o pr	1	\$13.12
154622	3G 3/4" Black Integral Bracket Cap, Meter Mount w/pr	1	\$35.08
154639	3G 3/4" Blue Mounting Bracket Cap w/pr	1	\$10.93
154585	3G 3/4" Blue Mounting Bracket Cap w/o pr	1	\$10.29
154647	3G 3/4" Blue Integral Bracket Cap w/pr	1	\$13.71
154790	3G 3/8" Blue Mounting Bracket Cap w/pr	1	\$7.60
154737	3G 3/8" Blue Mounting Bracket Cap w/o pr	1	\$7.02
154804	3G 3/8" Black Integral Bracket Cap w/pr	1	\$9.37
154806	3G 3/8" Blue Integral Bracket Cap w/pr	1	\$9.37



FILTER HOUSING SUMPS (continues on next page)

153014	#5 Slim Line® Blue Sump	1	\$11.89
153056	#5 Slim Line® Clear Sump	1	\$19.66
153049	#10 Slim Line® White Sump	1	\$13.55
153062	#10 Slim Line® Black Sump	1	\$14.35
153017	#10 Slim Line® Blue Sump	1	\$13.18
153018	#10 Slim Line® Clear Sump	1	\$19.87
153093	#10 Slim Line® Black Nylon Sump	1	\$50.02
153063	#10 Std Black Nylon Sump	1	\$112.53
153005	#10 Std Red High Temp Sump	1	\$112.53

Item No.	Description	Weight (lbs)	Case Quantity	Price Each (US \$)
----------	-------------	--------------	---------------	--------------------

Parts & Accessories

FILTER HOUSING SUMPS (continued)

153001	#10 Blue Sump		1	\$20.13
153128	#10 Clear Sump		1	\$25.55
153013	#20 Blue Sump		1	\$36.85
153058	#20 Slim Line® Blue Sump		1	\$33.21
153092	#20 Slim Line® Black Nylon Sump		1	\$107.12
153064	#20 Std Black Nylon Sump		1	\$172.31
153029	#10 Big Blue® Sump		1	\$30.42
153208	#10 Big Clear Sump		1	\$99.40
153070	#20 Big Blue® Sump		1	\$53.83
153166	#20 Big Clear Sump		1	\$105.30
153080	#20 Big Blue® Sump - White		1	\$53.83
153042	#10 All Natural Std. Sump - No Drain Plug (style 2)		1	\$42.63
153101	#10 All Natural Std. Sump w/Drain Plug		1	\$64.12
153046	#12 All Natural Sump for 222 - No Drain Plug		1	\$53.08
153106	#12 All Natural Sump for 222 - With Drain Plug		1	\$74.66
153040	#20 All Natural Std. Sump - No Drain Plug		1	\$70.17
153102	#20 All Natural Std. Sump - With Drain Plug		1	\$91.80
153055	#20 Ext All Natural Sump for 222 - No Drain Plug		1	\$72.42
153107	#20 Ext All Natural Sump for 222 - With Drain Plug		1	\$94.05

3G FILTER HOUSING SUMPS

153202	3G #10 SL Blue Sump		1	\$12.75
153203	3G #10 SL Clear Sump		1	\$19.33
153197	3G #10 ST Blue Sump		1	\$19.55
153194	3G #10 ST Clear Sump		1	\$24.86
153200	3G #20 ST Blue Sump		1	\$35.83
153195	3G #20 ST Clear Sump			\$63.15

O-RINGS

Buna-N FDA Grade

151121	#237 for #5 & #10 Slim Line® Housings		1	\$1.77
151120	#241 for #10, #12, & #20 Housings		1	\$1.77
151122	Big Blue® O-Ring		1	\$5.83
151254	Square-cut O-ring for Big Clear Housings		1	\$5.83
151231	OR-233 for RO & US Systems		1	\$7.71

Silicone FDA Grade

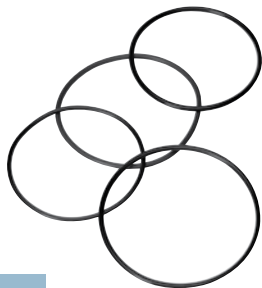
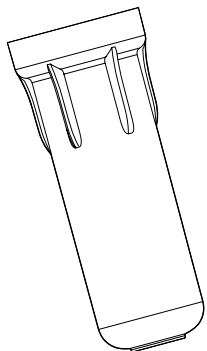
158096	#237 for #5 & #10 Slim Line® Housings		1	\$9.16
151118	#241 for #10, #12, & #20 Housings		1	\$9.16

Viton®

151117	#241 for #10, #12, & #20 Housings		1	\$10.02
--------	-----------------------------------	--	---	---------

PRESSURE RELIEF BUTTON KITS

151039	Pressure Relief Button Kit (Except VIH Assemblies)		1	\$2.70
144802	3G Pressure Relief Button Kit		1	\$3.52



Item No.	Description	Case Quantity	Price Each (US \$)
----------	-------------	---------------	--------------------

Parts & Accessories

CARTONS

140103	#103 Carton (for #5 Housings)	1	\$2.84
140607	#607 Carton (for Standard and #10 Slim Line® Housings)	1	\$1.55
140086-00	#86 Carton (for #20 Housings)	1	\$3.86
140606	#606 Carton (for #10 Big Blue® Housings)	1	\$2.68
140218-00	#218 Carton (for #20 Big Blue® Housings)	1	\$5.51

BAG VESSEL SERVICE PARTS

155374-03	PBR-410-BK 10" Replacement Basket	1	\$68.29
155373-03	PBR-420-BK 20" Replacement Basket	1	\$111.24
153098	#10 Big Blue® Sump with 3/8" NPT Drain	1	\$104.31
153097	#20 Big Blue® Sump with 3/8" NPT Drain	1	\$129.45
154515	PBC 1" Bag Filter Cap - 1/4" Vent	1	\$57.86
154508	PBC 1-1/2" Bag Filter Cap - 1/4" Vent	1	\$59.86
150296	SW-3 Big Blue® Wrench	1	\$3.12
144162	1/4" Vent Plug	1	\$1.46
144369	0-100 PSI Gauge	1	\$19.14
144357	3/8" FNPT x 3/8" NPT PVC Ball Valve	1	\$16.07
144362	3/8" Drain Plug HDPE	1	\$1.19
151122	Big Blue® O-Ring	1	\$5.83
257388	1/4" Gasket, Santoprene	1	\$2.71

ST SERIES STAINLESS STEEL HOUSING SERVICE PARTS

143220	Head Nut Kit for ST-1, ST-2, and ST-3	1	\$66.49
143339	Head Nut Gasket Kit for ST-1, ST-2, and ST-3	1	\$4.53
143216	Gasket for ST-1, ST-2, and ST-3	1	\$12.50
143218	Gasket for STBC Series	1	\$79.48
143221	Belly Clamp for STBC	1	\$193.47

1. **Acceptance** – Purchaser may accept this document (“Contract”) by returning to Pentair Filtration, Inc. (“Seller”) a signed copy of this document, by otherwise acknowledging receipt without objection within a reasonable period of time, or by expressing acceptance in any other legal manner, whether or not such acceptance contains terms additional to or different from those stated herein; provided that Seller objects to and rejects any such different or additional provisions, and such provisions shall not be a part of the contract between the parties. If Purchaser shall deem this Contract an acceptance of a prior offer, such acceptance is limited to the express terms contained on the face and the back hereof. Additional or different terms or any attempt by Purchaser to vary in any degree any of the terms of this order shall be deemed material and are rejected. However, this Contract shall not operate as a rejection of the Purchaser’s offer unless it contains variances in the terms of the description, quantity, price, or delivery schedule of the items.
2. **Shipping** – The estimated Shipping Date is based on production time required to process the order commencing with the date Seller receives the order. In the event it is necessary to revise the design, specifications, or this Contract, the shipping date shall be extended by the period of time required to achieve the mutually agreed upon corrections or adjustments. The seller reserves the right to make partial shipments. “Shipping Date” refers to the date the order leaves Seller’s dock; it does not take into consideration the transit time required to deliver the product between the Seller’s dock and the Purchaser.
3. **Delays in Shipping (Force Majeure)** – The Purchaser shall not hold Seller responsible for any delay or for any damages suffered by the Purchaser by reason of any delay due to fires, strikes, riots, Acts of God, priorities, government orders or restrictions, delays in transportation, delays by suppliers of materials or parts, inability to obtain necessary labor, or other causes beyond the control of Seller, Seller’s suppliers or Seller’s subcontractors. In the event of such delay, (a) the time for Seller’s performance shall be reasonably extended; (b) both parties shall take reasonable steps to adjust all affected dates in the order; and (c) a purchase price adjustment shall be made for additional costs incurred by Seller.
4. **Damage or Loss in Transit** – Delivery of goods to a carrier at Seller’s plant or other shipping point shall constitute delivery. Regardless of freight payment, all risk of loss or damage in transit shall pass to Purchaser at that time. Purchaser shall make claims for loss or damage to goods while in transit against the carrier; Seller will assist Purchaser in securing satisfactory adjustment of such claims. Shortages or damages must be identified and signed for at the time of delivery. If any concealed loss or damage is discovered, notify your freight agent within 48 hours and request an inspection. Terms are F.O.B. Sellers’ dock.
5. **Warranties** – Seller makes no representations or warranties except that Seller warrants that all goods manufactured by it shall be free from material defects in material and workmanship for a period of one (1) year from the date of shipment to Purchaser. If within such one-year period, such goods shall be proven to be materially defective to Seller’s reasonable satisfaction, then such defective goods shall be repaired or replaced, at Seller’s sole option. Such corrections or replacements shall constitute a fulfillment of all liabilities in respect of such goods. The warranty for all goods sold by Seller but manufactured by others shall be the warranty provided by such manufacturer for such goods. Seller shall take all reasonably commercial efforts (other than the payment of money) to provide the manufacturer’s warranty to Purchaser.

THE FOREGOING WARRANTIES ARE EXCLUSIVE AND ARE IN LIEU OF ALL OTHER EXPRESS AND IMPLIED WARRANTIES WHATSOEVER (EITHER IN FACT OR BY OPERATION OF LAW), INCLUDING BUT NOT LIMITED TO IMPLIED WARRANTIES OF MERCHANTABILITY AND FITNESS FOR A PARTICULAR PURPOSE OR OTHERWISE.

Seller is not liable for damage to goods, property or persons arising out of the improper installation of such goods; modification, repair or tampering by anyone other than Seller of such goods; misuse of the goods; or utilization of the goods under conditions, which exceed specifications for such goods.

THE PARTIES EXPRESSLY AGREE THAT THE LIMITATIONS OF INCIDENTAL AND CONSEQUENTIAL DAMAGES SET FORTH HEREIN ARE AGREED ALLOCATIONS OF RISK AND SHALL SURVIVE THE DETERMINATION OF ANY COURT OF COMPETENT JURISDICTION THAT ANY REMEDY HEREIN FAILS OF ITS ESSENTIAL PURPOSE.
6. **Liability** – SELLER SHALL HAVE NO LIABILITY TO ANY PERSON FOR PUNITIVE, INDIRECT, SPECIAL, INCIDENTAL, CONTINGENT OR

CONSEQUENTIAL DAMAGES OF ANY DESCRIPTION OR LOSS OF USE, REVENUE OR PROFITS, WHETHER ARISING OUT OF WARRANTY OR OTHER CONTRACT, NEGLIGENCE OR OTHER TORT, OR OTHERWISE.

7. **Description of Goods** – This Contract applies only to the goods described herein. The only specifications, which are a part of this Contract, are those written specification which are acknowledged in writing by Seller and which Seller has initialed and attached hereto or otherwise clearly identified with this Contract. All other documents describing or setting forth characteristics or specifications for the goods and all samples or demonstration models thereof are intended only to provide Purchaser with a general ideal about the goods. Purchaser acknowledges that such specifications do not constitute a part of this Contract or any other contract between the parties and are excluded from this Contract.
8. **Terms** – Payment is due from date of invoice in U.S. funds according to the terms on each invoice. Interest on past due balances at the rate 18% per annum. Purchaser shall be liable for Sellers costs of collection, including, without limitation, reasonable attorneys’ fees.
9. **Prices and Quotations** – Orders are accepted with understanding that the goods will be billed at price in effect at time of order, unless otherwise specified in approved written quotation by Seller. The price and performance of this order is subject to resource availability and costs within the control of Seller at the time of manufacture. Seller reserves the right to cancel or adjust prices and delivery without notice. Any price discrepancy on orders will require a revised purchase order from Purchaser.
10. **Freight** – Terms of shipment are F.O.B. Seller’s dock. Purchase orders must specify preferred carrier or order will be shipped via Best Way, pre-pay and add to the invoice. If additional services are requested, charges are the responsibility of the customer. Additional services include but are not limited to the following: LIFT-GATE equipment, driver unload, driver detention, sort and segregate, re-delivery, storage, palletizing, call for appointment services, special handling of Hazardous material, etc.
11. **Cancellation** – Purchaser may cancel orders only upon reasonable advance written notice, with agreement of cancellation by Seller, and upon payment to Seller of Seller’s cancellation charges which include, but are not limited to all costs and expenses incurred, and to cover commitments made (including any raw materials or other commitments), by the Seller and a reasonable profit thereon. Seller’s determination of such termination charges shall be conclusive.
12. **Engineering and Design Changes** – Seller reserves the right to make design, specification and/or engineering changes to its products without prior notification unless a written agreement between Seller and Purchaser exists as to the design, specification and/or engineering of the product. Title to, and full and unrestricted ownership and right to use all designs, specifications and engineering information provided by Seller shall at all times be and remain vested in Seller.
13. **Returned Goods** – Authorization and shipping instructions for the return of any salable goods must first be obtained by the Purchaser from Seller, otherwise shipment will be refused. The return of product is limited to no longer than one (1) year from the date of purchase, verified by invoice. Goods built to a customer’s or Purchaser’s specifications or special ordered cannot be returned for credit. Any product returned in anything but salable condition will be refused and returned to the Purchaser at the Purchasers’ cost. A 25% restocking charge will be deducted from our Credit Memorandum on the returned goods. Transportation charges on the returned goods must be prepaid and are the responsibility of the Purchaser. Any cost in excess of 25% restocking charge incurred in placing the goods in salable condition will be charged to the Purchaser by a corresponding deduction from the allowed credit. Goods returned for credit must be carefully packed so as to reach Seller without damage. If the return of our goods is made necessary through some fault of Seller, full credit will be allowed, including whatever transportation expense the Purchaser may have incurred, provided that the return has been authorized by Seller in writing and is in accordance with the packing and shipping instructions.
14. **Taxes and Other Charges** – Any manufacturer’s tax, retailer’s occupation tax, use tax, sales tax, excise tax, duty, custom, inspection or testing fee, or other tax, fee or charge of any nature whatsoever, imposed by any governmental authority on or measured by any transaction between Seller and Purchaser, shall be paid by Purchaser in addition to the prices quoted or invoiced.

Standard Terms & Conditions of Sale . . . (continued)

15. **Penalty Clause** – No penalty clause of any description, in any specification or order, will be effective unless approved in writing by the signature of a duly authorized officer of Seller.
16. **Errors** – All clerical errors by the Seller are subject to correction.
17. **General** – This Contract constitutes the entire agreement between the parties relating to the sale of goods described herein and supersedes any and all prior oral or written understandings. No addition to or modification of any provision shall be binding upon Seller, and Seller shall not be deemed to have waived any provision hereof shall be binding upon Seller, and Seller

shall not be deemed to waive any provision hereof or any remedy available to it unless such addition, modification or waiver is in writing and signed by a duly authorized officer of Seller. This Contract shall be governed by and construed in accordance with the Uniform Commercial Code as adopted in the State of Wisconsin. This Contract shall be deemed to have been made in and shall be constructed in accordance with and governed by the laws of the State of Wisconsin, without regard to the conflict of law provisions thereof, and shall be subject to the exclusive jurisdiction of the state and federal courts sitting in the State of Wisconsin.

Product Return Policy

Any item to be returned requires prior authorization from Seller's Customer Service Department, by phone (800-645-0267) or fax (800-882-6652). Requests for returns of merchandise (other than materially defective merchandise) must be within one (1) year from the date of the Seller's invoice date. **The Purchaser's purchase order number or Seller's invoice number must be provided when requesting the authorization.** Seller must have an invoice on file for the product requested to be returned. Seller reserves the right to deny requested product returns. Approved returns will be issued a Return Authorization Number (RA#) from Seller's Customer Service Department. Product returned without prior authorization by Seller **WILL BE REFUSED**. Approved returns will be given a Return Authorization Number (RA#). The RA# must be PLAINLY displayed on the outside of the parcel or parcels being returned or packages will be refused. Product must be returned within sixty (60) days upon issuance of the RA#. If product is not returned within sixty (60) days, the RA# will be void and any packages returned will be refused. Items said to be defective will be submitted to Seller's Quality Control Department for evaluation and, if determined to be a material manufacturing defect, credit or a replacement will be issued as Seller's option. Items sent out incorrectly by Seller will be credited upon return of the product. A replacement order will be sent upon request by Purchaser. Items to be returned as a result of over-stock, being incorrectly ordered, or an order cancelled by Purchaser, **WILL BE ASSESSED A 25% RE-STOCKING CHARGE AND THE COMPANY SENDING THE RETURNS WILL BE RESPONSIBLE FOR RETURN FREIGHT CHARGES.** All items returned, with the exception of goods claimed materially defective must be in even case lots, in their original packaging, and in new and unused condition. Any product returned failing to meet the above guidelines will be destroyed with no credit issued. **Any items returned to Seller without Seller's authorization or a Return Authorization Number WILL BE REFUSED.**

For further questions regarding this policy, contact the Sales Department at 800-645-0267

Return Policy

Additional Conditions and Notes

1. All list prices are quoted in US dollars.
2. **Minimum Order Value - \$200 NET** F.O.B. Sheboygan, WI Freight Collect. The minimum order amount value is \$200.00 NET shipping to one (1) location. Accepted emergency orders will receive a minimum order charge (difference between \$200 minimum and order total).
3. **SPECIAL HANDLING SERVICE** - Orders requiring special handling are subject to approval by Pentair Filtration Customer Service Department. A charge of \$50 may be applied to accepted orders requiring "Special Handling" (e.g. drop shipments, expedited/rush shipments, etc.). Freight terms for drop ship orders will be either pre-pay and add or 3rd Party billing to sold to customer. Only Pentair Filtration packing slips will accompany the shipment. Pentair Filtration Reserves the right to refuse requests to drop ship orders or special handling requests.
4. **Product sold in case lot quantities ONLY.** Contact distributors for price and availability of lesser quantities.
5. Housings and systems are priced without cartridges unless stated otherwise.
6. Nominal micron ratings are based on average values obtained in commercial production and are not intended for specification purposes.
7. For information on additional product availability, contact our Sales Department.

WARNING: Do not use with water that is microbiologically unsafe or of unknown quality without adequate disinfection before or after the unit. Systems certified for cyst reduction may be used on disinfected water that may contain filterable cysts.

CAUTION: Filter must be protected against freezing which can cause cracking of the filter and result in water leakage.

CAUTION: Filter should not be installed where exposed to direct sunlight.

CAUTION: Do not expose clear housings to organic solvents such as those found in aerosol sprays, cleaning products, or insecticides. Such exposure may cause filter damage, failure, cracking and leakage.

NOTE: A drinking water cartridge may contain carbon fines (very fine black powder). After installation, flush the cartridge with sufficient water to remove fines before using water. Run tap at least 20 seconds prior to using water for drinking or cooking purposes.

NOTE: Some harmless bacteria may attack cellulose media cartridges. If cartridge appears to disintegrate, or has a "musty" or "moldy" odor, switch to a synthetic media cartridge or consult manufacturer.

NOTE: Filter cartridges have a limited service life. Changes in taste, odor, color, and/or flow, may indicate cartridge needs replacing.

WE RESERVE THE RIGHT TO CHANGE DESIGN, SPECIFICATIONS OR PRICE WITHOUT NOTICE.

Sales Offices

AUSTRALIA:

Pentair Water Australia
2 Redwood Drive
Notting Hill, Victoria 3168
Australia
Contact: Greg Trezise
Tel: (61) 3-9574-4031
Fax: (61) 3-9574-4091
Email: Greg.Trezise@pentairwater.com

EUROPE:

Pentair Water Filtration France
100-106 Boulevard Jean Jaures
78806 Houilles Cedex
France
Contact: James Papas
Tel: (33-1) 61 04 28 00
Fax: (33-1) 61 04 04 00
Email: Sylvain.Dorriere@pw-europe.com

MIDDLE EAST:

Pentair Water Middle East (Shj. Br.)
Apt 404, Al Buhaira Bldg • Corniche Street
Al Buhaira - Al Majaz • P.O. Box 32789
Sharjah • U.A.E.
Contact: Usama Patel
Tel: 011 (971-6) 572-0552
Fax: 001 (971-6) 572-0553
Email: ukpe05@yahoo.com

BRAZIL:

Pentair Taunus Eletrometalurgica Ltda
Rua Americo Brasiliense, 2171 8th Ander
São Paulo-SP
BRAZIL: CEP 04715005
Contact: Marcos Allil
Tel: (55-11) 5184 1616
Fax: (55-11) 5184 2099
Email: mallil@pentairwater.com.br

INDIA:

Pentair Water Treatment Pvt Ltd
A-25, Mohan Cooperative Industrial Estate,
Mathura Road
New Dehli 110044
India
Contact: Manuj Bhatnagar
Tel: (91-11) 66118800
Fax: (91-11) 55118822

SINGAPORE:

Pentair Water
18 Boon Lay Way,
#04-110 Tradehub 21
SINGAPORE 609966
Contact: K.L. Wong
Tel: +65 6795-2213 ext. 114
Fax: +65 6795-2219
Email: kl.wong@pentairwater.com

CHINA:

Pentair Pacific Rim (Water) Limited
21 F of Cloud Nine Plaza
No. 1118 West Yan'an road
Shanghai 200052
CHINA
Contact: Tony Wang
Tel: (86-21) 3211-4588 Fax: (86-21) 3211-4582
Email: Tony.Wang@pentairwater.com

MEXICO:

Pentair Water
Guadalajara
Mexico
Contact: Marcos Apodaca
Tel: (52-33) 3832 0909
Fax: (52-33) 3832-3619
Email: mapodaca@pentairwater.com

TAIWAN:

Pentair Water Asia
2f-8 No. 205
Sec 1, Tun Hwa S. Road
Taipei, Taiwan 106
Tel: 886-2-2741-4789
Fax: 886-2-8773-6897
Contacts: Mr. Ben Lee
Ms. Terese Chung

UNITED STATES:

Pentair Filtration, Inc.
5730 North Glen Park Road
Milwaukee, Wisconsin 53209 USA
Tel: 920-457-9435 or 800-645-0267
Fax: 888-203-7361
Email: customerservice@pentairfiltration.com
Int'l Email: international@pentairfiltration.com



Pentair Filtration, Inc.
5730 North Glen Park Road
Milwaukee, WI 53209 USA
Phone: 800.645.0267 • Fax: 888.203.7361
www.pentekfiltration.com

©2009 Pentair Filtration, Inc.
310000 AP09